

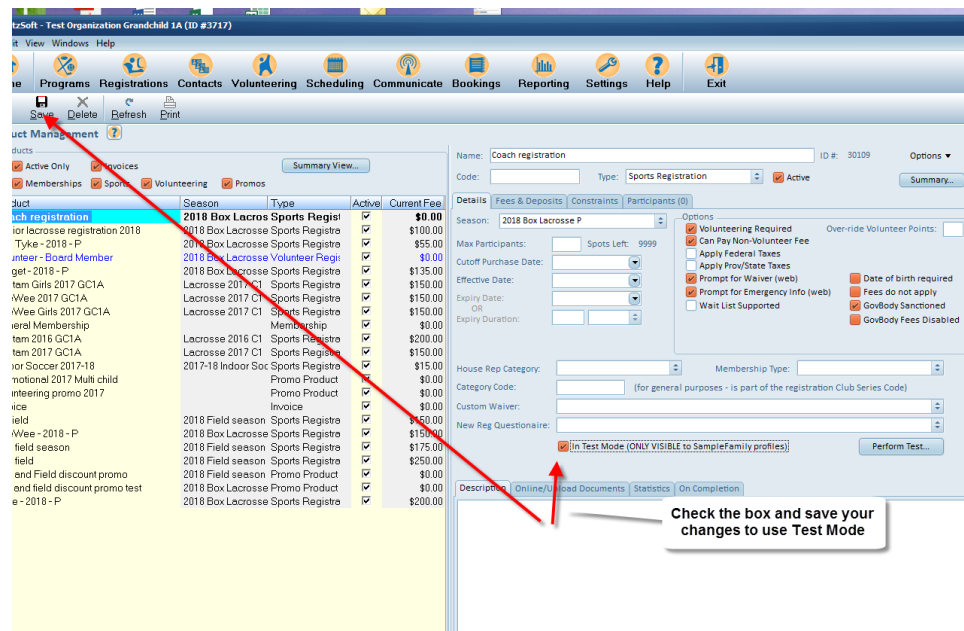
NEW FEATURE IN TEST MODE January 2018

Registrations > Product management -

On the Details tab of a product is a checkbox for ' In Test Mode ' (ONLY VISIBLE to SampleFamily Profiles) along with a ' Perform Test ' button.

Products need to be active with a current effective date if you wish to test your registration setup before opening the product to your membership. This would sometimes lend itself to accidental registrations- members using a bookmark to access their account and register while you are in the process of configuring your product. To alleviate this problem the " In Test Mode" checkbox has been introduced.

To use this feature, check the box and SAVE your changes.



Using In Test Mode restricts the product to being visible only in SampleFamily 's member account. This allows you to freely test with an active and open product without fear of someone registering when you're not ready for them .

Perform Test button will launch you into the SampleFamily member account where you can test using SampleFamily . It is suggested that you allow Cash as payment method during your tests if you wish to complete the registration in entirety . This will allow you to delete the test registrations when you have completed your testing.

When you are happy with your product setup and wish to allow membership to register, click the In Test Mode Checkbox to remove the checkmark and click SAVE. Product is now open and ready for registration.

Final step - Registration > Registration management, locate your samplefamily registrations and delete them from the system.